

KU LNA BB 0515-4 A SMA - Low Noise Broadband Preamplifier

Technical Specifications

Electrical Specifications

Parameter	Min.	Typ.	Max.	Units
Frequency	5		1500	MHz
Gain	20	22		dB
Gain Flatness		±1.0		dB
Noise Figure (30...1500 MHz)		1.2	2.0	dB
Input Return Loss (S11) (30...1500 MHz)	6	10		dB
Output Power at 1 dB Compression (P1dB)		22		dBm
Output Third Order Intercept (IP3)		37		dBm
DC Supply Voltage	12		14	V
Supply Current		140		mA

Mechanical Specifications

Input Connector	SMA-female, 50 ohms
Output Connector	SMA-female, 50 ohms
Case	milled aluminium
Dimensions (L x W x H)	50 x 30 x 17 mm
Weight	50 g

Applications:

Broadband LNA for watchingsystems
 Power amplifier for networkanalysis
 Suitable for large signal environments (sweep oscillators)
 CATV Distribution amplifier

Fulfilled Standards:

EMC directive 2014/30/EU
 Low voltage directive 2014/35/EU
 RoHS directive 2011/65/EU

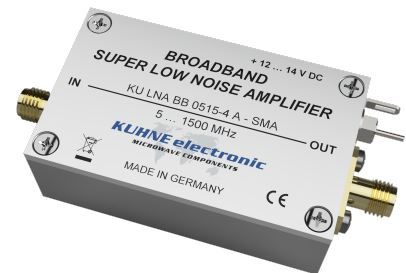
Maximum Ratings

Parameter	Ratings
Operating Temperature	-40...85°C
DC Voltage	15 V
Input RF Power	12 dBm

Permanent damage may occur if any of these limits are exceeded.

Noise figure specified at 18°C, will increase with higher temperature.

[Link](#) to the product page online.

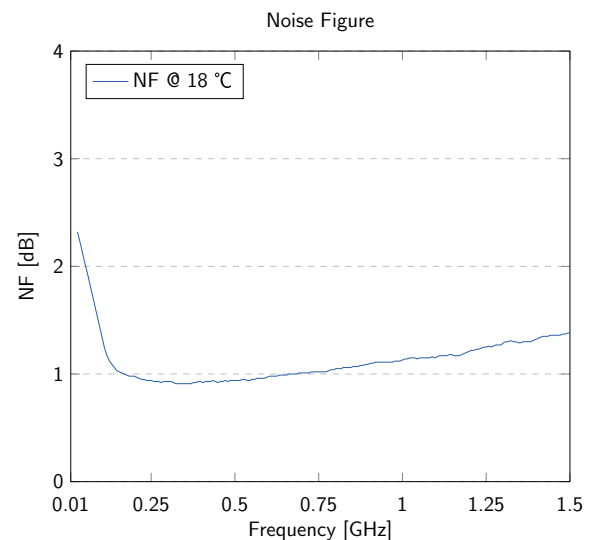
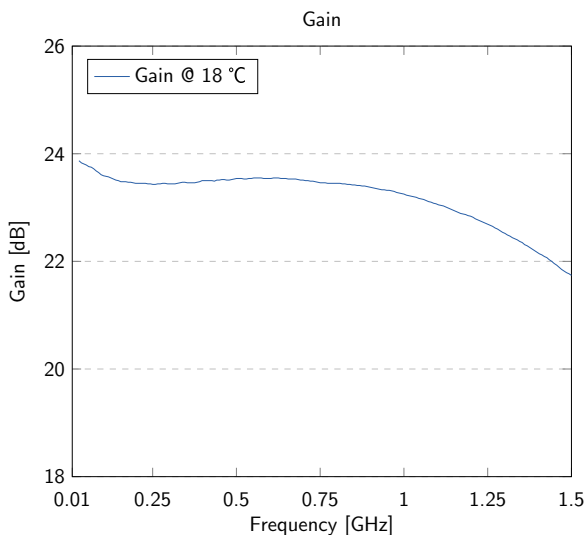


Features:

Large bandwidth
 High IP3
 Reverse polarity protection
 Solder pin for direct power supply

Typical Performance Data and Curves

(DC Voltage = 12V, DC Current = 140mA)



Notice

Additional protection against moisture is essential in case of outdoor installation.
 Installation in a waterproof case is recommended.

Test Certificate

Sig.: _____

QS: _____

SN: _____

Kuhne electronic GmbH

Scheibenacker 3
 95180 Berg - Germany

Telefon: +49(0)9293/800640
 E-Mail: info@kuhne-electronic.de

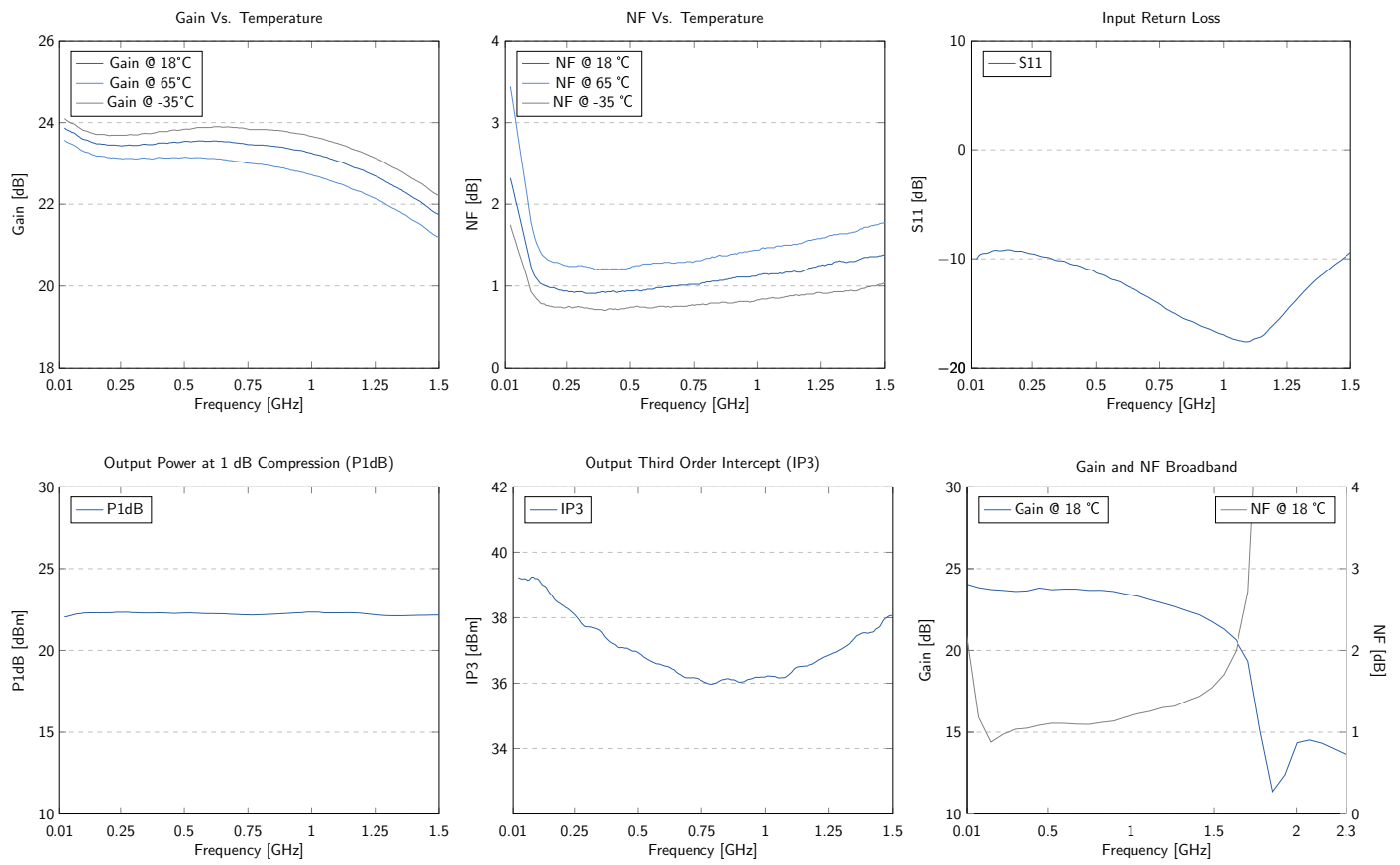
Page 1



KU LNA BB 0515-4 A SMA - Low Noise Broadband Preamplicifier

Typical Curves

(DC Voltage = 12V, DC Current = 140mA)



Typical Data

(DC Voltage = 12V, DC Current = 140mA)

Frequency (MHz)	VSWR	P1dB (dBm)	IP3 (dBm)	Gain (dB)	Noise Figure (dB)
200	2.04	22.3	38.4	23.4	0.97
400	1.86	22.3	37.2	23.5	0.93
600	1.64	22.2	36.5	23.5	0.98
800	1.44	22.2	36.0	23.5	1.05
1000	1.33	22.3	36.2	23.5	1.13
1200	1.38	22.3	36.6	22.8	1.21
1500	2.02	22.2	38.1	21.7	1.38

KU LNA BB 0515-4 A SMA - Low Noise Broadband Preampfier

Outline Drawings

(Unit: mm)

