



EN

Full HD
1080



BLIND SCAN

USER'S MANUAL



MULTIMEDIA
PLAYBACK*



audio and video codecs are subjects to availability*



CONTENTS

1.	SAFETY	3
2.	INTRODUCTION	3
3.	FEATURES	4
4.	REMOTE CONTROL	5
5.	FRONT PANEL.....	6
6.	REAR PANEL	7
7.	CONNECTING YOUR SYSTEM	8
8.	BASIC OPERATIONS	10
8.1	TURN ON XFINDER	10
8.2	POWER	10
8.3	CHANNEL UP/CHANNEL DOWN	10
8.4	VOLUME UP/VOLUME DOWN	10
8.5	NUMBER	10
8.6	MUTE	10
8.7	PAUSE	10
8.8	AUDIO	10
8.9	INFORMATION	11
8.10	EPG	11
8.11	TV/RADIO	12
8.12	CHANNEL LIST	12
8.13	PAGE UP/PAGE DOWN	13
8.14	TXT	13
8.15	SUBTITLE	13
8.16	ZOOM	13
8.17	MENU	13
8.18	VIDEO FORMAT	14
8.19	EXIT	14
9.	FINDER.....	14
9.1	SATELLITE INSTALLATION	14
9.2	TERRESTRIAL INSTALLATION	17
9.3	CABLE INSTALLATION	17
10.	ANGLE	18
11.	SPECTRUM.....	19
12.	SERVICE	20
12.1	ORGANIZING SERVICE	21
12.2	ORGANIZING FAVOURITES	22
12.3	CHANNEL LIST	23
12.4	EPG	24
12.5	COMMON INTERFACE	25
12.6	CA SETTING	25
13.	MEDIA	27
13.1	FILE LIST.....	27
13.1.1	Record Files	27
13.1.2	MP3 Files	27
13.1.3	Image Files	28
13.1.5	Software	30
13.1.4	All	30
13.2	STORAGE INFORMATION	30
13.3	PVR SETTING.....	31
13.4	USB SPEED TEST	31
13.5	REMOVE USB DEVICE SAFELY!	31
14.	SYSTEM.....	31
14.1	INFORMATION	31
14.2	BATTERY INFORMATION	32
14.3	DEFAULT SETTING	32
14.3.1	Default Value:	32
14.3.2	Delete All Channel:	32
14.3.3	Save default value	33
14.4	SOFTWARE UPGRADE.....	33
14.4.1	Upgrade by RS232:	33

13.4.2	Upgrade By USB	33
13.4.3	Backup to USB.....	34
13.4.4	Http Upgrade	34
13.4.5	FTP Upgrade	34
14.5	LANGUAGE.....	34
14.6	A/V CONTROL.....	35
14.7	NETWORK LOCAL SETTING	36
14.8	TIME SETTING	36
14.9	TIMER	36
14.10	CONSTITUTION	37
15.	NEW FEATURES	38
15.1	TIME SHIFT	38
15.2	RECORD	38
16.	TROUBLE SHOOTING	40
17.	SPECIFICATIONS	41



Manufactured under license from Dolby Laboratories.

Dolby and the double-D symbol are trademarks of Dolby Laboratories.

1. SAFETY

This HD Xfinder has been manufactured to satisfy the international safety standards. Please read the following safety precautions carefully.

MAINS SUPPLY: 100 - 240V AC 50/60Hz

OVERLOADING: Do not overload wall outlet, extension cord or adapter as this may result in fire or electric shock.

LIQUIDS: Keep liquids away from the HD Xfinder. The apparatus shall not be exposed to dripping or splashing and that no objects filled with liquids, such as vases, shall be placed on the apparatus.

CLEANING: Disconnect the HD Xfinder from the wall outlet before cleaning .Use a light damp cloth (no solvents) to dust the HD Xfinder.

VENTILATION: The slots on top of the HD Xfinder must be left uncovered to allow proper airflow to the unit. Do not stand the HD Xfinder on soft furnishings or carpets. Do not expose the HD Xfinder to direct sunlight or do not place it near a heater. Do not stack electronic equipments on top of the HD Xfinder.

ATTACHMENTS: Do not use any attachments that are not recommended as these may cause hazard or damage the HD Xfinder.

CONNECTION TO THE SATELLITE DISH LNB: Disconnect the HD Xfinder from the mains before connecting or disconnecting the cable from the satellite dish.

FAILURE TO DO SO CAN DAMAGE THE LNB.

CONNECTION TO THE TV: Disconnect the HD Xfinder from the mains before connecting or disconnecting the cable from the satellite dish.
FAILURE TO DO SO CAN DAMAGE THE TV.

EARTHING: The LNB cable MUST BE EARTHED to the system earth for the satellite dish.

LOCATION: Place the HD Xfinder indoor in order not to expose to lightening, rain or sunlight.

2. INTRODUCTION

Thank you for purchasing the HD Xfinder.

This HD Xfinder can fast spectrum analysis with 950 ~ 2150 MHz frequency span. Support Constellation Chart. it has a High resolution 7"TFT LCD and a lithium battery can work at outdoors. It has a 2GB of U disk , so you needless schlep hard disk when it work at outdoors. And also use as a DVB-S+T/C Xfinder on a TV.

This HD Xfinder is fully compliant with the international DVB standard and thus transmits digital images, sounds, information guides and teletext directly to your TV or Xfinder through the satellite broadcasting.

Now you can comfortably see and receive digitally transmitted music, news, movie and sports satellite broadcasts in your office or at your home.

In service search section, both the automatic service search method and the manual search mode are provided. Also it supports DiSEqC 1.0, 1.2 and USALS, enabling you to move your antenna in order to focus preferred satellite. You can save up to 6000 TV and Radio services and work around with the favorite, Lock, Delete, Move and Sort functions.

The menu is very modern and supports multiple languages. All functions can be carried out using the remote control and some of the functions can also be carried out using the front panel. The HD

Xfinder is easy to use and adaptable for future advances. Please be aware that new software may change the functions of the HD Xfinder.

If you have any difficulties concerning the operation of your HD Xfinder, please refer to the relevant section of this manual, including the 'Troubleshooting'. This Manual will provide you with useful information on using the HD Xfinder.

3. FEATURES

- MPEG-Fully DVB-S / DVB-S2 HD compliant
- DVB-T/DVB-T2/DVB-C
- Fast spectrum analysis
- Support Spectrum information save, load and compare.
- Data parsing of frequency Selected
- Constellation Chart
- High resolution 7"TFT LCD
- Large lithium battery capacity (5500mAh)
- Auto Calculate Angle of AZ ,EL
- 6000 channels (TV and Radio) programmable
- Multilingual menu text support
- Channel switching time less than 1 second
- Channel list editing
- Favorite channel list editing
- True-color On-Screen Display (OSD)
- Full Picture In Graphic (PIG) function
- Electronic Program Guide (EPG) for on screen channel information
- Subtitle supported
- Teletext supported by VBI insertion and software emulation
- Program and Channel information transfer from Xfinder to Xfinder
- DiSEqC 1.0, 1.1, 1.2 and USALS
- HDMI HD Video/Audio Output
- Easy upgrading by Ethernet & USB & RS 232 Port
- USB 2.0 Host
- Built in U disk (2GB)
- LAN 10/100Mbps Ethernet
- RTC (Real-Time-Clock)
- Time Shift
- Video Recording
- Recording one channel and Time Shifting another channel
- One key to start or stop recording of TS stream

4. Remote Control



You can power on/off the Xfinder, operate on screen menu, and use a variety of hot key function.

POWER

To switch the Xfinder power on/off

MUTE

Used to enable or disable the audio

NUMERIC KEYS

Used to select channels or enter programming parameters

TV / RADIO

Xfinder switches between TV and Radio mode.

0 (ZOOM)

Press 0 key select zoom times, from X1 to X16.

AUDIO

Audio channels setup, to select audio mode; Left, Right , Stereo, Mono.

F1

To switch LCD on/off

F2

To switch fan on/off

F3

To start or stop recording of TS stream

F4

To display channel status or various program information of current service.

F5

To switch AV output/input

EPG

Display the Programs guide on screen when available.

MENU

Displays the Main Menu on the screen, or return to the previous menu or status.

EXIT

Cancel the user selection and return to the viewing mode from a menu.

OK

To select menu option, or to updated on entry.

<,> KEY

To adjust volume level, or to move cursor left or right in the menu.

^,v KEY

To change channels, or to move cursor up or down in the menu.

PAGE+/PAGE-

To move up the cursor to the next or previous page in the menu or channel list.

• REC

To start the recording.

Red Key

Has different functions per menu.

TXT(YELLOW KEY)

Shows teletext information of the current channel supports.

Subtitle(Green KEY)

Subtitle Display.

V.FORMAT (blue Key)

Press V.FORMAT button to switch the display mode among "Auto","ByNativeTV720p_50","720p_60","1080i_50","1080i_60","1080p_50" and "1080p_60".

► Play

To play the MP3, JPEG, or Record files.

■ Stop

To stop the Time Shift, recording, or MP3/JPEG player.

|| **PAUSE**

Used to select the freeze function.
Press once to freeze the screen picture.

◀◀ **FB**

To start Fast Backward function.

▶▶ **FF**

To start Fast Forward function.

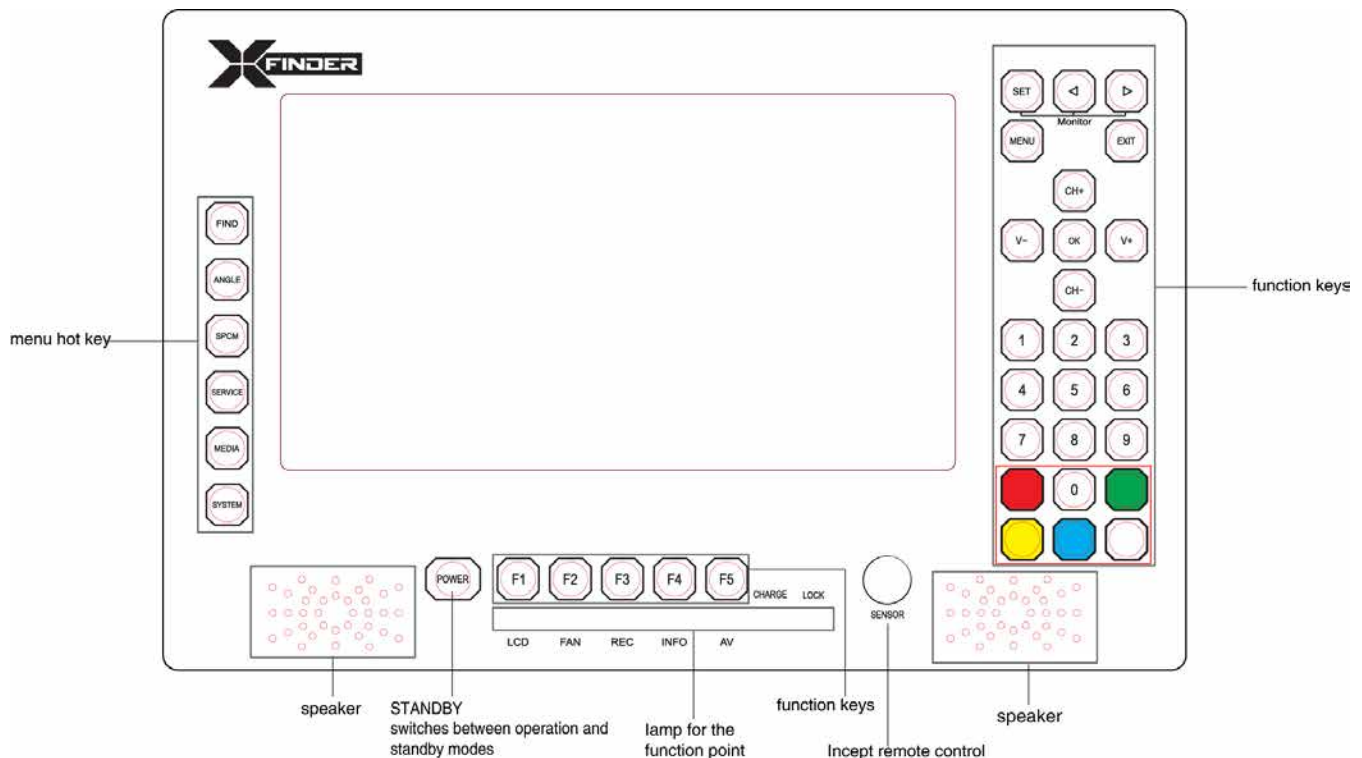
5. Front panel

🔌 **POWER**

To switch the Xfinder power on/off

NUMERIC KEYS

Used to select channels or enter programming parameters



0 **(ZOOM)**

Press 0 key select zoom times, from X1 to X16.

FIND

shortcut key enter to Xfinder menu.

ANGLE

shortcut key enter to Angle menu.

SPCM

shortcut key enter to Spectrum menu.

SERVICE

shortcut key enter to Serice.

MEDIA

shortcut key enter to Media menu.

SYSTEM

shortcut key enter to System menu.

F1

To switch LCD display on/off

F2

To switch fan on/off

F3

To start or stop recording of TS stream

F4

To display channel status or various program information of current service.

F5

To switch AV output on/off

MENU

Displays the Main Menu on the screen, or return to the previous menu or status.

EXIT

Cancel the user selection and return to the viewing mode from a menu.

OK

To select menu option, or to updated on entry.

V-,V+ KEY

To adjust volume level, or to move cursor left or right in the menu.

CH+,CH-KEY

To change channels, or to move cursor up or down in the menu.

PAGE+/PAGE-

To move up the cursor to the next or previous page in the menu or channel list.

AUDIO(Red)

Audio channels setup, to select audio mode; Left, Right , Stereo, Mono.

Red Key

Has different functions per menu.

TXT(YELLOW KEY)

Shows teletext or subtitle information of the current channel supports.

Subtitle(Green KEY)

Subtitle Display.

V.FORMAT (blue Key)

Press V.FORMAT button to switch the display mode among "Auto", "ByNativeTV"720p_50", "720p_60", "1080i_50", "1080i_60", "1080p_50" and "1080p_60".

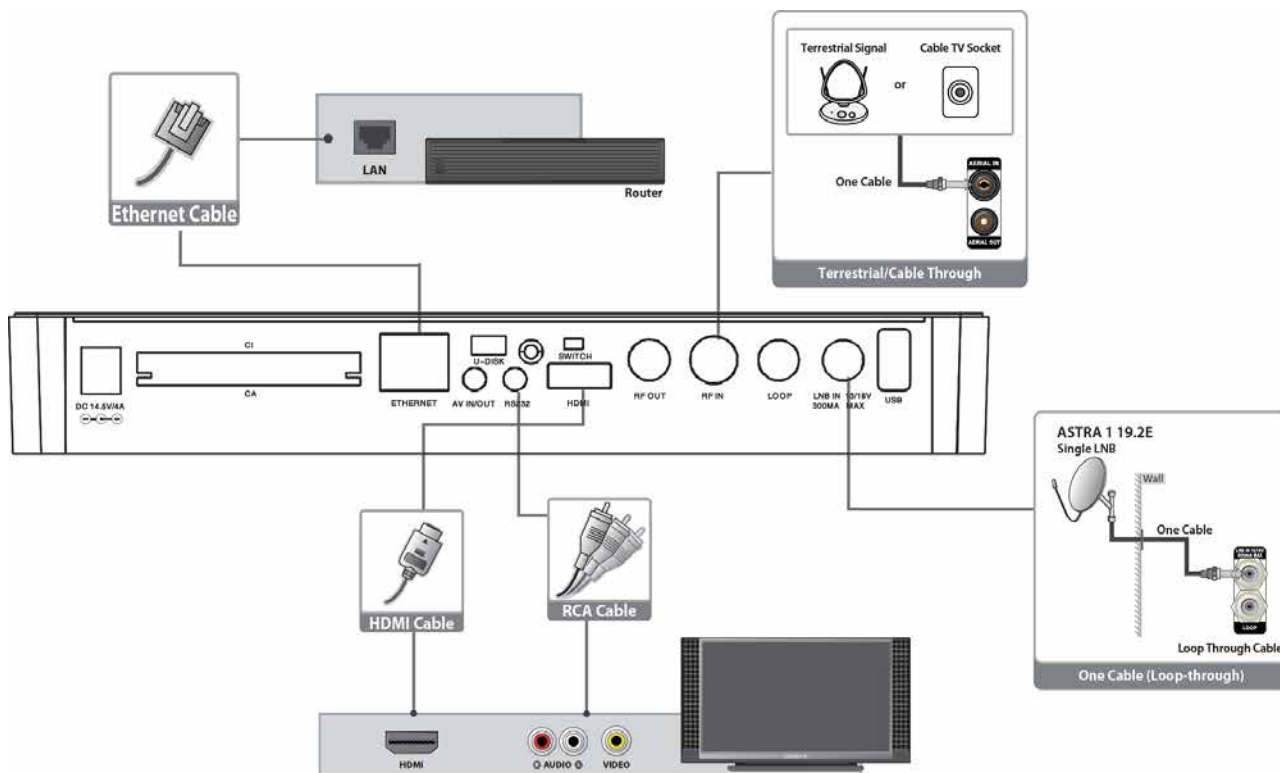
FUN

To select brightness,contrast and colour of LCD screen.

<,> KEY

To adjust brightness,contrast and colour of LCD screen.

6. Rear Panel



Please refer to the diagram above for all possible connections of your Xfinder
Do not connect the unit to the mains socket until all other connections have been made and checked.
Your configuration can vary depending on model

DC 12V: Connect the external power supply (DC 14.5V/4A) .

RF OUT: This enables the connection of another Xfinder.

RF IN: This port is to connect the coaxial cable from terrestrial antenna/cable antenna

LOOP: This enables the connection of another Xfinder.

LNB IN 13/18V 300mA MAX: This port is to connect the coaxial cable from LNB of your Dish.

AV IN/Out: This port is used to connect the AV port of the television with a AV switch line that one enter port and three output port.

HDMI: Audio and Video output socket for TV set with HDMI Input Jack only.

RS 232C: SERIAL PORT: This is used to connect your Xfinder to a computer through a serial cable

Ethernet: Network port, you can get a new software updates from this port.

USB: USB 2.0 Host, connect to USB hard disk, or flash disk.

U disk: Built in U disk (2GB)

SWITCH: To switch U disk /equipment

CA: One slot CA Interface for Conax.

CI: One socket for Conditional Access Modules CAM

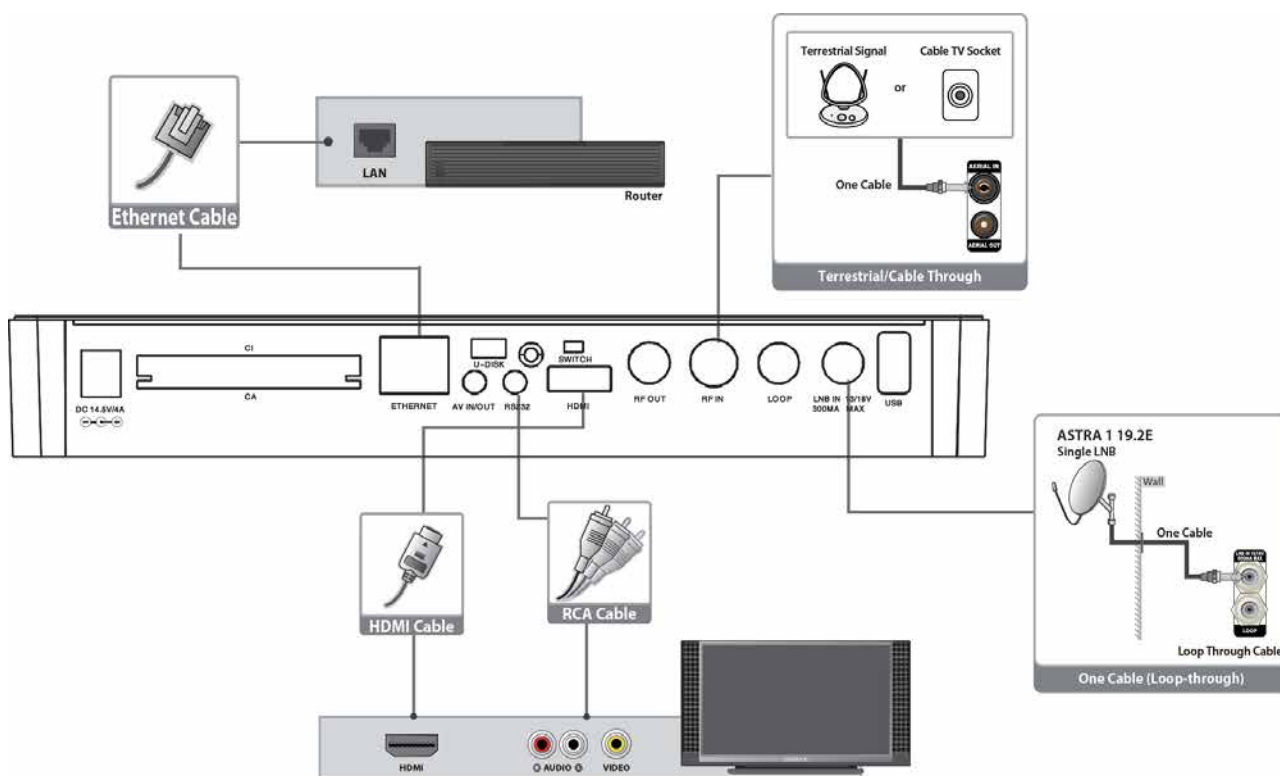
7. Connecting Your System

This section describes how to connect your product to match your particular devices setup and to gain optimum signal quality. The product provides various interfaces to connect to the TV, VCR or other devices. Select the most appropriate depending on the device you have.

Warning: Connect all components before plugging any power cords into the wall outlet.

Always turn off the product, TV and other components before you connect or disconnect any cables.

Note: If you encounter any problems setting up your product, please contact your local retailer helpline.



7.1 Connecting the Antenna

1. Connect one or two satellite coaxial cable from the wall to LNB IN.
2. Connect a cable/terrestrial coaxial cable to AERIAL IN.

Note: Cable and terrestrial can't concurrence.

Connecting the TV

1. **TV with the HDMI connector:**
For the best picture quality, connect the product and TV using an HDMI cable.
2. **TV with the AV connector:**
To output video and audio, connect the product and TV using an AV cable.

Note:

1. Connecting your TV directly to the audio/video output of the product will assure a more vivid picture and enhance your viewing enjoyment.

Connecting to the LAN:

Connect one end of the Ethernet cable to the product and the other end to the LAN router.

TV with Motorized System (DiSEqC 1.2)

Connect one end of your coaxial cable to the LNB IN connector on the Xfinder and the other end to the REC or Xfinder connector on the DiSEqC 1.2 motor.

Connect the coaxial cable from the LNB to the LNB connector on the DiSEqC 1.2 motor.

All our Xfinders are designed to be DiSEqC 1.0 and DiSEqC 1.2 compatible.

This allows multiple antennas to be connected to the Xfinder at the same time.

If you have two or more fixed antennas or LNBs, then we recommend you use a DiSEqC 1.0 switch.

Connect the coaxial cable from the first LNB to the LNB 1 or LNB A input connector of the DiSEqC switch.

Do the same for any other LNBs that you have.

Connect one end of a coaxial cable to the RF output connector of the DiSEqC switch, connect the other end to the LNB IN socket on the Xfinder.

To the digital Xfinder, you can connect either a single satellite antenna directly or LNB of multi-feed equipment.

8. Basic Operations

8.1 Turn on Xfinder

First, press the Device's Main [Power] button to turn on the unit. When the Xfinder is first used, there will play the first channel from the default Channel List. If the Xfinder is not first used, Xfinder will play the same channel as last time before turning off.

? Frequently Asked Question

Q: The power of my Xfinder has been turned on and not in Standby mode, but the TV screen showed nothing:

A: Make sure the TV set has been set to the correct video input (not the TV channels). For example, if you have connected the unit with the Video1 input of the TV set, the TV set has to be switched to Video1.

Q: The power of my Xfinder has been turn on and not in Standby mode, but the TV screen showed nothing except one box with "No Signal" image.

A: That means the channel, which you select, is no signal. It could be several causes:

- 1 The channel which you select is not in your allocate satellite. The simply solution is to change channel.
- 2 The signal of current TV channel is too weak. You can try to change channel to other strong signal channels. If the problems still exist, please consult your local dealer or other professionals for technical service.
- 3 You use the Dual LNB, and you need Modify LNB Type

8.2 Power

- 1 Press [Power] Key can enter the Standby state

- 2 In Standby state, press [Power] Key again can call back the unit and go on play the previous channel
- 3 User can also disconnect the device's main power to end the Standby state.

8.3 Channel Up/Channel Down

In full screen, press [CH+/CH-] to change channel.

8.4 Volume Up/Volume Down

In full screen, press [VOL+/VOL-] to adjust volume.

8.5 Number

In full screen, use number key and press [OK] on the Remote Control Unit to change channel.

8.6 Mute

- 1 Press [MUTE] key to mute the sound and the screen will show up mute OSD.
- 2 Press [MUTE] key again to restore sound.

8.7 Pause

- 1 In playing mode, press [Pause] key, the picture will be paused, but the sound of the channel will still continues.
- 2 Press [Pause] key again, the screen's picture will skip over to the current playing picture, and the sound of the channel will correspond playing.

8.8 Audio

- 1 In full screen, press [AUDIO] key can open the "Audio" window on the screen.



- 2 You can modify the audio track by press [CH+/CH-] key and modify the audio mode by press[VOL+/VOL-] key.
- 3 Mode: Left/Right/Stereo/Mono

8.9 Information

In full screen, press [F4] key can open information screen, in the window shows the parameters of current channel.



8.10 EPG

- 1 The Xfinder has an Electronic Program Guide (EPG) to help you navigate channels through all the possible viewing options. The EPG supplies information such as channel listings and starting and ending times for all available channels. Press [EPG] key to display EPG screen.



- 2 Press [Red] key can select the channels by different group, such as by Favorite /Satellite /Provider /CAS etc.
- 3 Press [Green] key to select different display mode among Now EPG, Next EPG, More and Schedule, like the following picture:



- 4 Press [Yellow] key in EPG menu can set one record timer or go to Timer List menu.



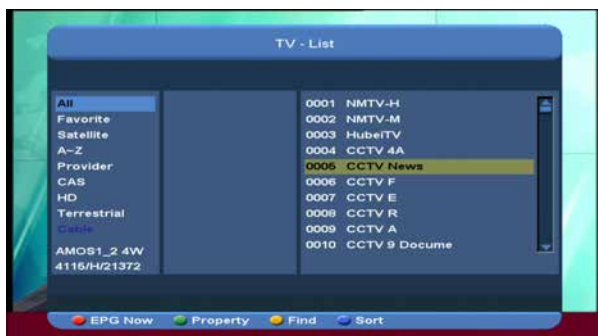
- 5 In EPG menu, when you select one event by high light item, you can set this event to record timer list directly by press [REC] button.
- 6 In EPG menu, press [Exit] to close EPG screen.

8.11 TV/RADIO

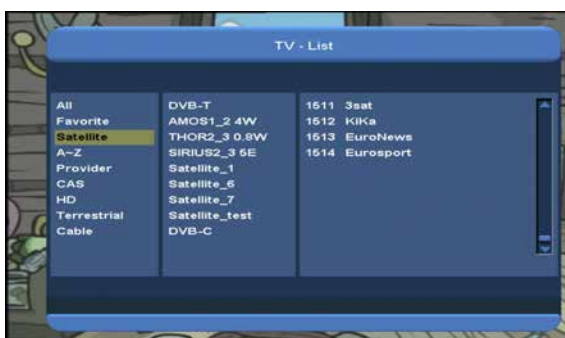
In TV mode, pressing [TV/RADIO] key can switch to Radio mode. In Radio mode, press [TV/RADIO] key to switch to TV mode.

8.12 Channel List

- 1 In full screen, press [OK] key can enter "Channel List".



- 2 Press [CH+/CH-] key to change the different group. Which you can watch like below.



- 3 Press [Red] key to display details information for EPG Now.



- 4 Press [Green] key you can change the current channel's property, such as FAV/ Lock/ Skip/ Delete/ Rename.



- 5 Press [Yellow] key can open the "Find" window like below. You can press [Up/Down/left/right] keys to move highlight and press [OK] key to input the letter. Select OK and press [ok] button to find you want.



- 6 Press [Blue] key can open the "Sort" windows like below. There are five kinds of sorting ways. You can press [Ch+/Ch-] key to move highlight and press [OK] key to

confirm you selection.



The five kinds of sorting way are:

- ⑦ Number: Sorting by scanning result.
 - ⑦ Free+PayTV: Sort channel through free and scramble sequence. Free channel will in the front of channel list and scramble channel will at the rear of channel list
 - ⑦ PayTV+Free: Sort channel through scramble and free sequence. Scramble channel will in the front of channel list and free channel will at the rear of channel list el List.
 - ⑦ Name (A-Z): Sorting in Alphabetical Order, ignore "\$" symbol.
 - ⑦ TP: Sorting by TP order.
- 7 Press [CH+/CH-] key to move highlight and press [OK] key to play the highlighted channel.
 - 8 Press [Page Up/Down] key to page up and page down.
 - 9 Press [Exit] key to exit the channel list.

8.13 Page Up/Page Down

In Channel list, press [Page+/Page-] key can page up and page down the channel list.

8.14 TXT



- 1 Press [Yellow] key in full screen, you can open teletext page on the channel which has teletext information.
- 2 If the channel has no teletext information, it will show "No Teletext Data" on the screen.

8.15 Subtitle

- 1 Press [Green] key in full screen, you can open subtitle page on the channel which has subtitle information.
- 2 If the channel has no subtitle information, it will show "No subtitle Data" on the screen.

8.16 Zoom

- 1 The [0] key allows you to magnify a certain area on the images
- 2 Press [0] key again, the image will enlarge rotate as x1, x2, x4, x6, x8, x12, x16.
- 3 In "x2 ~ x16" image, using [Up/Down/Left/Right] keys to move the image center area you want to see.
- 4 In zoom mode, press [Exit] to close "Zoom" window.

8.17 Menu

- ⑦ Press [MENU] key can open the menu, exit the current menu to last menu or close the window.

8.18 Video Format

- 1 Press [v.Format] (blue) key under Full Screen playback for 1st, it will show the current system outputting video resolution, continuously press this key, system will switch its outputting video resolution by sequence "Auto-> By Native TV -> 720P_50-> 720P_60-> 1080i_50-> 1080i_60-> 1080p_50->1080p_60".



8.19 Exit

- 1 Press [EXIT] key can exit the current menu to last menu or close the window.

9. Finder



- 1 Press [VOL+/VOL-] key to select finder
- 2 Press[CH+/CH-] key to select one item.
- 3 Press [menu] key to back to main menu.

9.1 Satellite Installation

Satellite list

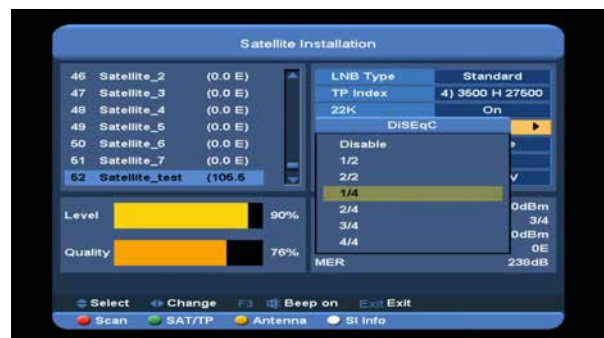


- 1 You can move highlight by press [CH+/CH-] key or Press [P+/P-] key to page up or page down and [OK] key to select the Satellite.
- 2 Press [left] or [green] button to enter TP List.
Note: You can't edit and scan the TP when you press [left] button, it only show the list.
- 3 Press [right] button to enter into DiSEqC Setting menu.



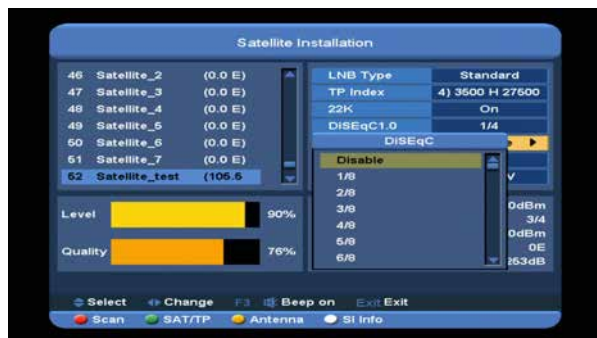
Auto DiSEqC: Press [ok] key to run Auto DiSEqC function, it can find the satellite connect to which port automatically.

DiSEqC1.0: Press [VOL+/VOL-] button to select one item among Disable, 1/2, 2/2, 1/4, 2/4, 3/4, 4/4.



DiSEqC1.1: Press [VOL+/VOL-] button to select one item among Disable, 1/8, 2/8, 3/8, 4/8, 5/8, 6/8, 7/8, 8/8, 1/16, 2/16, 3/16, 4/16,

5/16, 6/16, 7/16, 8/16, 9/16, 10/16, 11/16,
12/16, 13/16, 14/16, 15/16, 16/16.



Motor: Press [VOL+/VOL-] button to select one item among Off, DiSEqC1.2, USALS.

- 4 Press [F3] button to switch between Beep on and Beep off.
- 5 Press [red] button to display the scan menu, and then setting parameter, at last select Manual Scan or Blind Scan to scan channels of the selected satellites or TP. If you select Blind Scan, NIT Search needless edit.

Note: Manual Scan can only scan channels of the TP that in the TP list, but Blind Scan can scan channels needless TP, it can search the has signal TP.

Scan Mode: Press [VOL+/VOL-] button to switch it between All and Free (means you want to scan all channels or only scan free channels).

Program Type: Press [VOL+/VOL-] button to switch it among TV + Radio, TV Channel, Radio (means you want to scan all channels, all radio or only scan TV/Radio channels).

NIT Search: Press [VOL+/VOL-] button to switch it between On and Off. If selected On, meaning receive the latest transponder information.

- 6 Press [yellow] button to switch to antenna parameter list of highlight satellite.



LNB Type: Press [ok] button and then press [VOL+/VOL-] button to select one item among Universal, standard, user, unicable. For Example: If you use the unicable LNB, then you should select "Unicable" option in "LNB Type" and will display the submenu for Unicable setting.

TP Index: Press [VOL+/VOL-] button, or press [ok] button and then press [CH+/CH-] button to switch TP.

22K: Press [VOL+/VOL-] button, or press [ok] button and then press [CH+/CH-] button to select on or off. When this item is switched to "ON", Xfinder will receive TV and radio input signal from 22K port. If the item is switched to "Off", the Xfinder will receive all signals from OK port.

Note: When LNB Type is universal, 22K can't edit.

DiSEqC1.0: Press [VOL+/VOL-] button to select one item among Disable, 1/2, 2/2, 1/4, 2/4, 3/4, 4/4.

DiSEqC1.1: Press [VOL+/VOL-] button to select one item among Disable, 1/8, 2/8, 3/8, 4/8, 5/8, 6/8, 7/8, 8/8, 1/16, 2/16, 3/16, 4/16, 5/16, 6/16, 7/16, 8/16, 9/16, 10/16, 11/16, 12/16, 13/16, 14/16, 15/16, 16/16.

LNB Power: Press [VOL+/VOL-] button, or press [ok] button and then press [CH+/CH-] button to switch it among 13V/18V, 13.5V/18.5V, off.

- 7 Press [blue] button to enter into edit menu.
When in the satellite list it enter edit satellite menu, or it enter edit TP menu.
- 8 Press [white] button enter into SI Info menu.
It shows the information of current TP. Like frequency, provider name, network name, network ID, Stream ID, Network TP Count, TV list, radio list, level, quality, RF Level, FEC, C/N, BER, MER. Press [red] button to display the Network TP List.

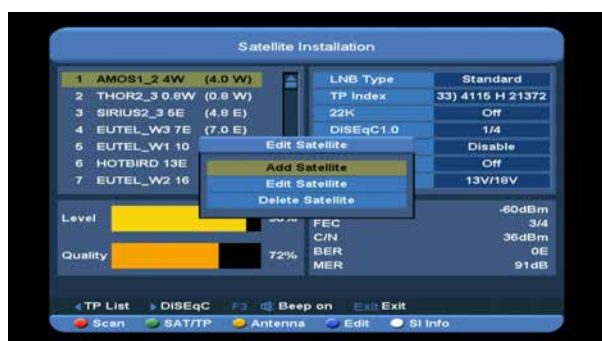
[VOL+/VOL-] button select the letter and press [ok] button to input it, when finish select "ok" and press [ok] button.

Longitude: Press number keys to input the longitude, and press [VOL+/VOL-] button to select east or west.

3. In "Delete Satellite" item, press[ok] key and select "yes" to press [ok] button to delete the selected Satellite.

Note: If you selected more than one satellite, it will delete the highlight satellite.

Edit Satellite



Press [CH+/CH-] key to select one item among Add Satellite, Edit Satellite, and Delete Satellite.

1. In "Add Satellite" item, press [ok] key to add a new Satellite.

Name: Press [ok] button to enter into key board menu to input the name. Press [V-/V+] button to select the letter and press [ok] button to input it, when finish select "ok" and press [ok] button.

Longitude: Press number keys to input the longitude, and press [VOL+/VOL-] button to select east or west.

2. In "Edit Satellite" item, press[ok] key to edit the selected Satellite

Note: If you selected more than one satellite, it will edit the highlight satellite.

Name: Press [ok] button to enter into key board menu to input a new name. Press

TP list



Press[CH+/CH-] key to select one item among Add TP, Edit TP, Delete TP and Delete All TP.

1. In "Add TP" item, press [ok] key to add a new TP.

Frequency: Press [VOL+/VOL-] button or press number keys to set the frequency.

Symbol Rate: Press [VOL+/VOL-] button or press number keys to set the rate.

Polarity: Press [VOL+/VOL-] button to select **Horizontal** or **vertical**.

Note: The parameters of "Frequency" and "Symbol Rate" can set by number keys. The available range are "3000~13450 MHz" and "1000~45000Ks/s".

2. In "Edit TP" item, press[ok] key to edit the selected TP

Note: If you selected more than one TP, it will edit the highlight TP.

Frequency: Press [VOL+/VOL-] button or press number keys to set a new frequency.

Symbol Rate: Press [VOL+/VOL-] button or press number keys to set a new symbol rate.

Polarity: Press [VOL+/VOL-] button to select Horizontal or vertical.

Note: The parameters of "Frequency" and "Symbol Rate" can set by number keys. The available range are "3000~13450 MHz" and "1000~45000Ks/s".

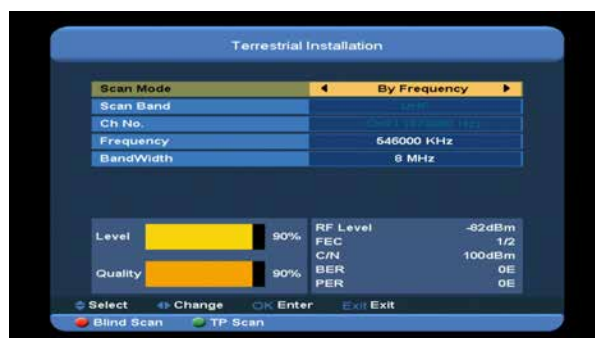
3. In "Delete TP" item, press[ok] key and select "yes" to press [ok] button to delete the selected TP.
Note: If you selected more than one TP, it will delete the highlight TP.
4. In "Delete All TP" item, press[ok] key and select "yes" to press [ok] button to delete All TP.

9.2 Terrestrial Installation

Press [OK] key to enter the selected item.



1. You can select the Bandwidth according different country.
2. You can set the Tuner Power ON/OFF.
3. Press [Red] key can directly into blind scan mode to scan the current programs.
4. Press [Green] key to enter the following menu.

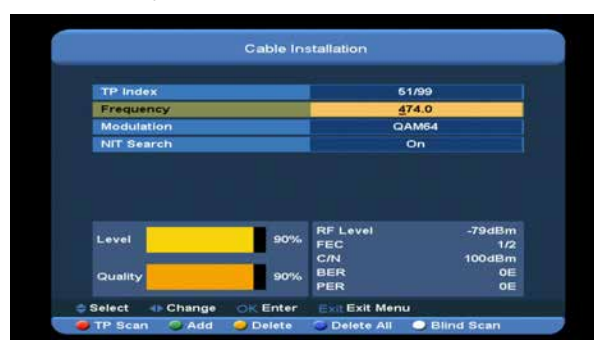


⑦ Scan Mode.

- 1 There are two modes. You can scan channel by channel or by frequency".
- 2 When scan band is UHF and region is "France", the range of Ch No. is from 21 to 69.
When scan band is VHF and region is "France", the range of Ch No. is from 1 to 9.
(it's according to region)
- 3 Press [Red] key to enter blind scan menu, or press [Green] key to enter TP scan menu.
- 4 Press [Exit] key to exit the scanning.

9.3 Cable Installation

Press [OK] key to enter the selected item.



1. You can input the Frequency by use the numeric button of the RCU.
You can select the QAM value among 16QAM, 32QAM, 64QAM, 128QAM and 256QAM.
You can turn ON or OFF the NIT Search, if you set the Scan Mode to Manual Scan.

2. Press [green] button to add a new TP.
3. Press [Yellow] button to delete the select TP
4. Press [blue] button to delete the all TP.
5. Press [white] key to enter blind scan menu, or press [Red] key to enter TP scan menu.
6. Press [Exit] key to exit the scanning.

10. Angle

When you enter to “Angle” menu, you will see the screen like below:



“Angle” is use for user to enter local longitude; local latitude and satellite longitude. By the evaluation from the Xfinder evaluate the antenna azimuth and antenna elevation; user can follow this guidance to adjust antenna.

- 1 In “Satellite” item, press [VOL+/VOL-] key to switch satellite that you want to set or press [OK] key to enter satellite list for selection.



- 2.In “Satellite Longitude” Item, display Longitude value of current Satellite. You can edit it by number keys and [VOL+/VOL-] key.
- 3.In “Local” Item, press [VOL+/VOL-] key to select Manual or city that satellite setting



- ⑦ Press[Red] key to add a new city



- ⑦ Press [Green] key to edit the select city.
- ⑦ When you press [Yellow] key, there will show up a warning message for reminding whether you will delete the current city or not. If you select “Yes”, the current city will be deleted.
- ⑦ When you press [blue] key, there will show up a warning message for reminding whether will delete all cities or not. If you select “OK”, all cities will be deleted.

4. You can use number keys to input parameters in “Longitude” and “Latitude” at add city and edit city menu.
5. You can use [VOL+/VOL-]key to select east or west in “Longitude” and “Satellite Longitude”, select north and south in “Latitude”.
6. Moving highlight to “calculate” item and press [OK] key. The lower column on the

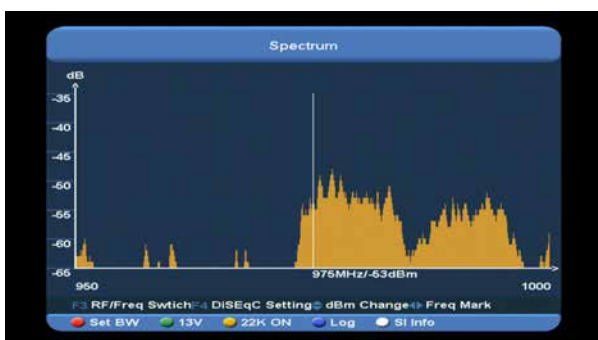
screen will calculate the corresponding value automatically.

7. Orientation means the angle between south and satellite.

Press [MENU] key to draw back to "Main" Menu.

11. Spectrum

When you enter to "Spectrum" menu, you will see the screen like below:



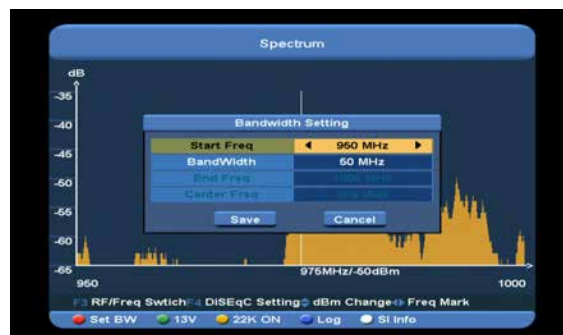
It shows the frequency that has signal of you connected satellite.

1. Press [F3] button to switch the show of X axes between RF and Freq.
2. Press [F4] button to set the DiSEqC.

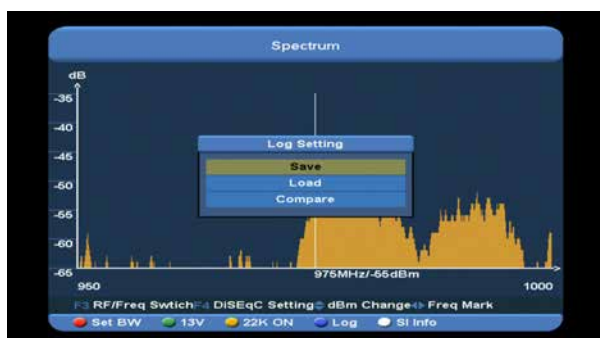
- Press [ok] button on Motor item to enter set motor mode, now you can press [VOL+/VOL-] button to move the motor from west or east. And press [exit] button to exit this mode.
- DiSEqC1.0: You can use [VOL+/VOL-] key to switch options. There are several options for your selection:
 - i. Disable: without DiSEqC.
 - ii. 1/2, 2/2: two ports DiSEqC
 - iii. 1/4, 2/4, 3/4, 4/4: 4 ports DiSEqC
- DiSEqC1.1: You can use [VOL+/VOL-] key to switch options. There are several options for your selection:

- i. Disable: without DiSEqC.
- ii. 1/8, 2/8... 8/8: 8 ports DiSEqC.
- iii. 1/16, 2/16... 16/16: 16ports DiSEqC.

3. Press [CH+/CH-] button to change the begin dBm of Y axes.
4. Press [VOL+/VOL-] button the current frequency by 1MHz. Or number buttons to change the current frequency by the number multiply 1MHz, and press [0] button to switch add or minus.
5. Press [red] button to enter into Bandwidth Setting menu. Now you can change Start Freq by [VOL+/VOL-] button or number keys, the available range are "950MHz ~ 2150MHz". Set BandWidth by [VOL+/VOL-] button among 50MHz, 100MHz, 300MHz, 600MHz, 900MHz.



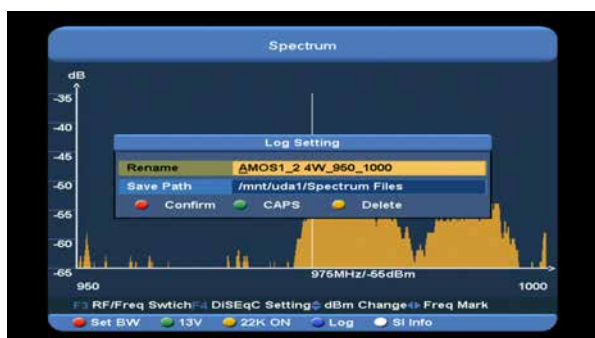
6. Press [green] button to switch power between 13V and 18V.
7. Press [yellow] button to switch 22K between ON and OFF. When this item is switched to "ON", Xfinder will receive TV and radio input signal from 22K port. If the item is switched to "OFF", the Xfinder will receive all signals from 0K port.
8. Press [blue] button to enter into Log Setting menu. You can save spectrum, load spectrum and compare the spectrum to old.
 - Press [ok] button on save item, you will see the menu like below:



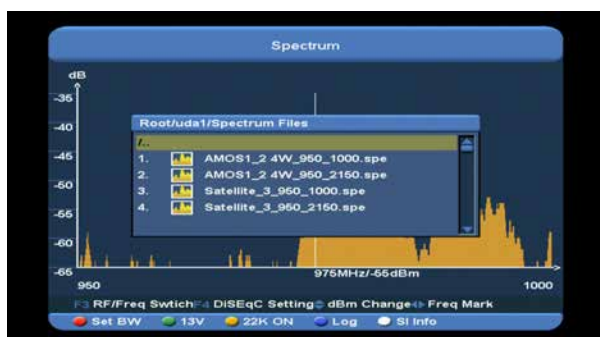
It has a default name in Rename item, you can rename it. Press [green] button to switch letter between capital and small. Press [yellow] to delete the letter that cursor point.

At Save Path item, it also has a default path, you can change it by [ok] and [CH+/CH-] buttons.

Press [red] button to confirm.



- Press [ok] button on load item to enter"/Root/usb1/Spectrum" directory, you will see the menu like below:



In this menu you can load the log from USB conveniently, Press [CH+/CH-] button to select a log. press [red] button to confirm.

- Press [ok] button on compare item to enter"/Root/usb1/Spectrum" directory, press [CH+/CH-] button to select one log, press [red] button to confirm, you will see the screen like below:

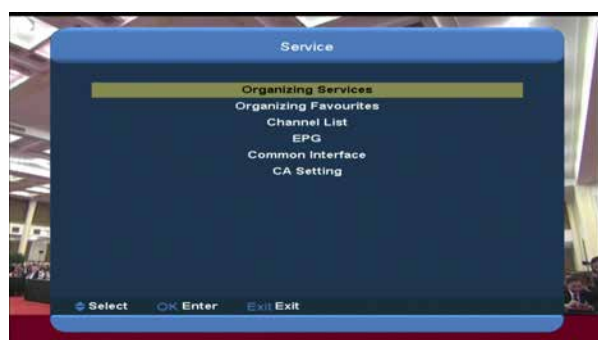


9. Press [white] button to show the TP if the current frequency has signal, press [ok] button it will display serve info, like below. Or it displays no signal.



12. SERVICE

When you press [Menu] key and select service item, then press [ok] button to enter menu, there will display the picture like below:



In "Service" menu:

- Press [CH+/CH-] key to select one item among Organizing services, Organizing favourites, Channel List, EPG, Common Interface, CA Setting.
- ⑦ Press [OK] key to enter the selected item.
- ⑦ Press [Menu] key to go back to main menu.

12.1 Organizing Service

When you enter to “Organizing Service” menu, there will display the screen like below.



1. You can move highlight by press [CH+/CH-] key and [OK] key to select the programs which you want to edit.
2. You can press [Page Up/Page Down] key to implement the Page Up/Page Down function.
3. You can use [Red] key to switch different Group.
4. You can press [Green] key to select the programs by different select mode.
5. You can press [yellow] key to find the programs.

Groups



- 1 Press [Red] key can open the “Groups” window like above
- 2 You can press [CH+/CH-] key to move highlight and press [OK] key to select group.
- 3 Press [Menu] key to close “Groups” List.

Options



1. Press [Green] key can open the “Options” window like above.
2. You can press [CH+/CH-] key to move highlight and press [OK] key to confirm the select mode.
3. Press [Menu] key to close “Options” List.

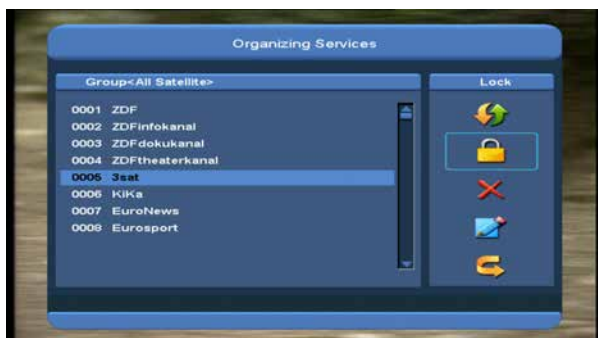
Move

1. Select the channels which you want to edit in channel list by press [OK] key or other select mode.
2. Then press [Right] key to move the highlight to right toolbar.
3. Select Move icon by press [CH+/CH-] key and [OK] key.
4. Move the channels to the position which you want by press [CH+/CH-] key and press [OK] key to confirm. Like the following picture:



Lock

- 1 Select the channels which you want to edit in channel list by press [OK] key or other select mode.
- 2 Then press [Right] key to move the high light to right toolbar.
- 3 Select Lock icon by press[CH+/CH-] key.
- 4 Lock the channel by press [OK] key. Like the following picture:



Delete

- a) Select the channels which you want to edit in channel list by press [OK] key or other select mode.
- b) Then press [Right] key to move the high light to right toolbar.
- c) Select Delete icon by press[CH+/CH-] key.
- d) Delete the channel by [CH+/CH-]key.

Skip and rename

Follow the same way you can set the channel's Skip or give the new name for high light channel.

Find



1. Press [yellow] key can open the "Find" window. You can press [Up/Down/left/right] key to move highlight and press [OK] key to input the selected symbol or letter into the dialogue.
2. After input each character, the program list on the left will search the channel according your input, and list the matched channel.
3. Move highlight to "OK" and press [OK] key can close "Find" window and you can select channel from the channels list directly.

12.2 Organizing Favourites

This menu is helpful in adding and deleting services to and from the favorite group.



1 FAV List

To choose the FAV group by press [blue] button.

2 Add

To add services into favorites, mark the desired services by press [ok] button in Service List, press [▶] button and than choose Add mode and press [OK] button.

3 Remove

To remove services from favorites, mark the desired services by press [OK] button in Favorite List, press [◀] button and than choose Remove mode and press [OK] button.

4 Move

You can reorder and move the service to the preferred position in Favorite List.

5 Rename

Select the desired FAV List by press [blue] button, using [◀,▶] and [CH+/CH-] buttons to choose Rename mode and press [OK] button to display keyboard, and rename it.

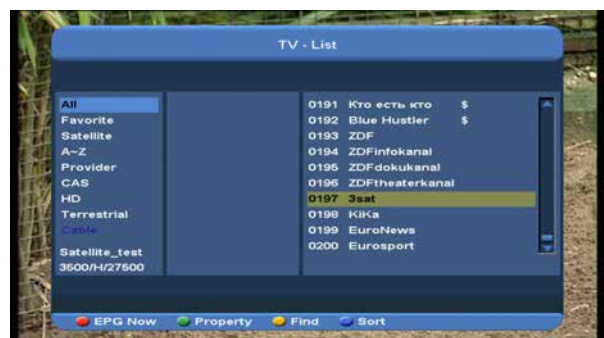
6 Group, Options and Find functions

Please refer to the “Organizing Services” part in this manual.



12.3 Channel List

- 1 When you enter to “channel list” menu, there will display the screen like below.



- 2 Press [CH+/CH-] key to change the different group. Which you can watch like below.



- 3 Press [Red] key to display details information for EPG Now.



- 4 Press [Green] key you can change the current channel's property, such as FAV/ Lock/ Skip/ Delete/ Rename.



move highlight and press [OK] key to confirm you selection.



12.4 EPG

4. Press [Yellow] key can open the "Find" window like below.



- 1 The Xfinder has an Electronic Program Guide (EPG) to help you navigate channels through all the possible viewing options. The EPG supplies information such as channel listings and starting and ending times for all available channels.



- ⑦ You can press[Channel Up/Channel Down/Volume Up/Volume Down]key to move highlight and press [OK] key to input the selected symbol or letter into the dialogue.
- ⑦ After input each character, the program list on the left will search the channel according your input, and list the matched channel.
- ⑦ Move highlight to "OK" and press [OK] key can close "Find" window and you can select channel from the channels list directly.

- 2 Press [Red] key can select the channels by different group, such as by Favorite /Satellite /Provider /CAS etc.



5. Press [Blue] key can open the "Sort" window like below. There are five kinds of sorting ways. You can press [CH+/CH-] key to

- 3 Press [Green] key to select different display mode among Now EPG, Next EPG, More and Schedule, like the following picture:



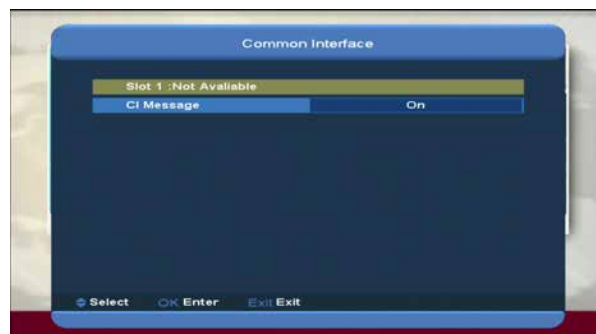
- 4 Press [Yellow] key in EPG menu can set one record timer or go to Timer List menu.



- 5 In EPG menu, when you select one event by high light item, you can set this event to record timer list directly by press [REC] button.
- 6 In EPG menu, press [Exit] to close EPG screen.

12.5 Common Interface

We provide one CI slots (option, some model has two slot) for user to use. Using different CAM & cards provided by different CAS operator, user can view many type or scrambled channels.



We provide this menu to display the detail information of the CAM & card inserted in the slot. User can check all this information according to the help message at the bottom of each menu.

Note: All information showed in this menu and submenu is abstract from CAM & card. In case something is wrong, it may be the problem of CAM or card.

When you insert the CAM correctly at any time, a message will show in the screen to tell you that which CAM has been detected by the Xfinder and is available now.

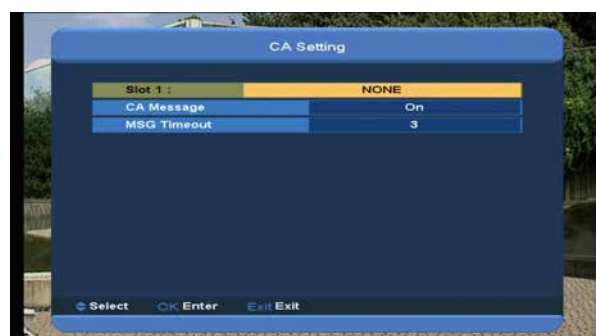
CI Message

It is used to turn on or turn off the CI info display function by using [V-/V+] buttons or [OK] button to select.

ON: To display the CI info.

OFF: Don't display the CI info.

12.6 CA Setting



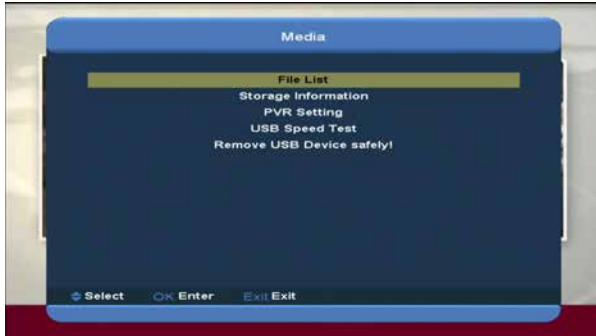
We provide one CA slots for user to use. Xfinder has build in smart card module with CONAX system. By using cards in this system provided by operators, it is possible to watch many scrambled channels coded in this system. This menu shows detailed information about cord inserted into cord reader module. It allows inserted according to help messages visible on the bottom of the screen.

Note: All information showed in this menu and submenu are coming from inserted card. In case if anything is wrong, it could be card problem. After inserting the card correctly at any time, a message-box will show on the screen with message about detecting the card, in "card info" menu all available information will be displayed.

13. Media

if you enter to the "Media" Menu, you will see the picture like the below:

Note: If no USB Hard Disk insert to the Xfinder this menu is not available.




13.1 File List

In this menu you can select the file list from USB A□USB B . Press [ok] button to enter the File list. you can check the files and folders of the USB storage, and you can play MP3 and JPEG files.



13.1.1 Record Files

In this menu you can playback the record files, and you can press [Red] key to rename the file, or press [Green] key to lock the file, or press [Yellow] key to delete the file.

You can press [1] key to adjust the volume while you preview the record file on top of the right corner .and you can press  to enable or disable the audio.

13.1.2 MP3 Files



In this menu you can select the MP3 file to play by press [OK] key or [PLAY] key. Also you can setting the play list.

[Red] key: Show play list as the picture bellow:



- **Red Key:**

Move the selected file by press [Red] key and [CH+/CH-]key.

- **Green key:**


Delete the selected file by press Green key.

- **Yellow Key:**

Delete all the file by Yellow Key, but there is one remind "Delete All" before practical operation, if select Yes, all file will be deleted, and close the Play list window.

- Press OK button to play file.

[Green] key:

All the MP3 files in current directory are added into MP3 play list by press [Green] key, and will display "  "behind the MP3 files.

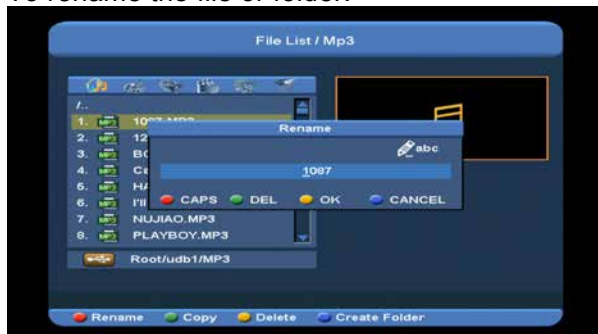
[Yellow] key:

To edit the files or folders in the USB storage.
press this button you can see the picture like the below.



● Red Key

To rename the file or folder.



● Green Key

To copy the file or folder to other folder.



● Yellow Key

To delete the file or folder from the disk.

● Blue Key

To create a new folder in the disk.

Press [EXIT] key to draw back to 'EDIT' MENU

[Blue] key:

To setting the Repeat mode of the MP3 player.



After begin to play MP3, it will show the MP3 play window.

Press "PAUSE" button to pause.. Press "PLAY" button to play. Press "STOP" button to stop and time return to **00:00**.

Press "3" button to jump to the beginning of file list if play is over 3 seconds; or jump to previous file if play less than 3 seconds.

Press "4" button to go to the next file.

Press "FORWARD" button to forward 4S.

Press "BACKWARD" button to back 4S.

Jump to beginning or end if less than 4S to the beginning or end of music file.

Switch to the next file or stop playing by the repeat mode when play is over on the current file.

[0] key: To sort the file list by different order.

[2] key: To add mp3 or jpeg to play list.

13.1.3 Image Files



Press 'OK' button on the selected files to play the files.



You can preview the picture at the top right corner if the scroll bar is on the picture files (JPG, BMP), and show the logo when at MP3 file.

Move scroll bar when press up/down key, page up or down by page key.

Go into sub-directory when press ok key in the file directory, play the selected file when scroll bar is on the file, automatic return USB menu after play is over.

White key:

In this menu to setting JPEG player.



[0] Key:

To sort the file list by press [0] button.

[Red] Key:

Show file play list. There will display "The type of play list do not exist" if there are no any file.

Image view operation

Please see the below image operation menu if Image function is selected.



● Red Key:

Move the selected file by press Red key and [CH+/CH-] key.

● Green Key:

Delete the selected file by press Green key.

● Yellow Key:

Press Yellow Key, will delete all image files in play list, but system will remind you "Delete All" before practical operation, if you select Yes, all file will be deleted and Play list window will be closed.

● Press OK button to play file

[Green] key:

All the Image files in current directory are added into Image play list by Green key, and will

display "♥" behind the Image files.

[Yellow] key:

To edit the files or folders in the USB storage . like in MP3 menu. Include rename, copy, delete and create folder function. You can press [VOL+/VOL-] key to previous menu.


[Blue] key

To preview the images. press this key you can see the picture like below.



14.1.4Video

You can see the video files in this menu, it can support .mpeg and .ts format file.and press [play] key, you can preview the video at the top right corner.

You can press [1] key to adjust the volume while you preview the video file,press [0]key to sort the file list. and press  to enable or disable the audio

● Yellow key

To edit the files or folders. Include rename, copy, delete and create folder function. You can press [VOL+/VOL-] key to previous menu.

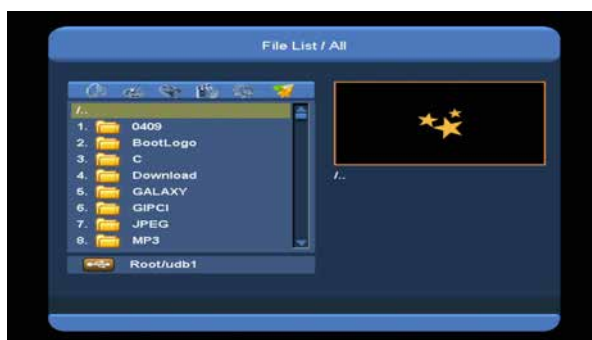
13.1.5.Software



If has software in current directory, you can press [Green] key to upgrade like below.



13.1.4All



You can preview all files in this menu.

13.2 Storage Information

Press "OK" button to enter the HDD Information menu like the below picture, in this menu you can see the details information about the HDD.

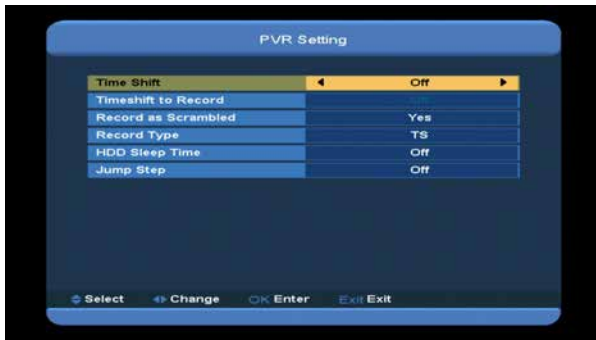


If you want to format the HDD, press "yellow" button to enter Format menu, then select the File System between the "FAT" and the "NTFS", Press "OK" Button to confirm.

Note: If you format the HDD, all the files include MP3, JPEG and the record files will be deleted from the HDD.

If you want change the path for recording files and timeshift files, press "blue" button to enter the DVR Set menu, then press OK button to set the path on current select disc.

13.3 PVR Setting



1 Time Shift:

ON: Enable the Time Shift function.

OFF: Disable the Time Shift function.

2 Timeshift to Record

ON: Means when you press the [●] Button to record the program, it will merge the Timeshift files and the record files.

OFF: Means when you record the program, it just starts when you press [●] button, not include the Timeshift files.

3 Record Type

You can select the record type by press [V-/V+]key

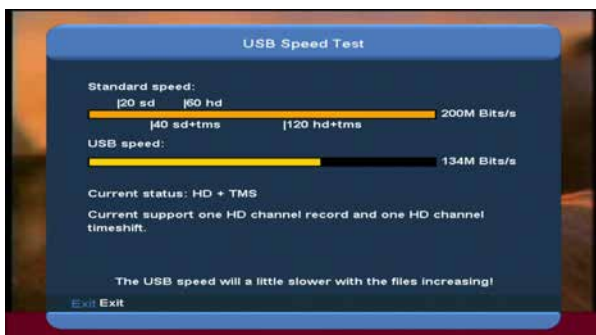
4 HDD sleep Time

You can select the HDD sleep time by press [VOL+/VOL-] key. When the HDD is not in using mode, it will sleep after the time which you select.

5 Jump Time

You can select the jump time by press [VOL+/VOL-] key.

13.4 USB Speed Test



In "USB Speed Test" Menu you can see the Standard speed and your USB hard disk speed, according this information you can know what operation your disk can support.

13.5 Remove USB Device safely!

Use this menu you can remove the USB Device safely.

14. System

When you enter to "System" menu, you will see a screen like below:



In "System" menu:

- 1 Press [CH+/CH-]key to select menu pages among Information, Battery Information, Default Setting, Software Upgrade, Language, A/V Control, Network Local Setting, Time Setting, Timer, and Constellation.
- 2 Press [OK] key to enter the selected item.

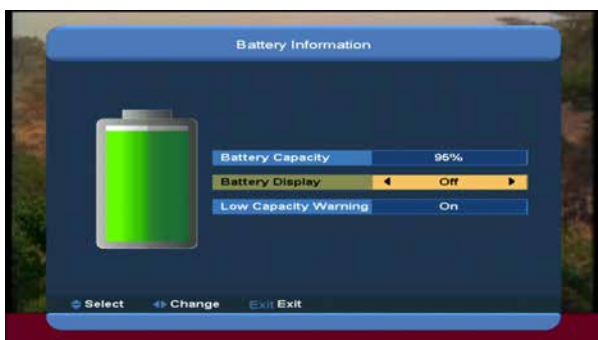
14.1 Information



- 1 When you enter to “Information” menu, you will see a screen like above. The screen displays: MODEL ID, S/W VERSION,H/W VERSION,LOADER VERSION,LATEST UPDATE, SN,,CHIP ID, PANEL VERSION.
- 2 Press [MENU] key to back to “Information” menu.

14.2 Battery Information

When you enter to “Battery Information” menu, you will see a screen like below:



- 1.Battery Capacity: Display percent of remaining battery capacity , If Battery is change up, display "change up".
- 2.Battery Display: You can press[VOL+/VOL-] keys to switch On / Off. If selecte on, it will display percent of remaining battery capacity in full screen.
- 3.Low Capacity Warning: You can press [VOL+/VOL-] keys to switch it between On and Off. If select on, when battery capacity is less than 10%, the screen will pop a reminding message that “battery low capacity ”.
4. Press [MENU] key to draw back from “Battery Information” menu.

14.3 Default Setting



14.3.1 Default Value:



When you press [OK] key in the “Default Setting” item:

- 1 There will pop a dialogue for you to enter the password, and the default password is “0000”.
- 2 After you input the correct password, there will show a warning message to inquiry you “The operation will load default and erase all the channels that user added, continue?”.
- 3 If you select “OK” option, the all revised parameters of the Xfinder will reset to default value. Please carefully to using this function.
- 4 In step 1 and step 2, press[Exit]key can draw back from this item and without saving.

14.3.2 Delete All Channel:



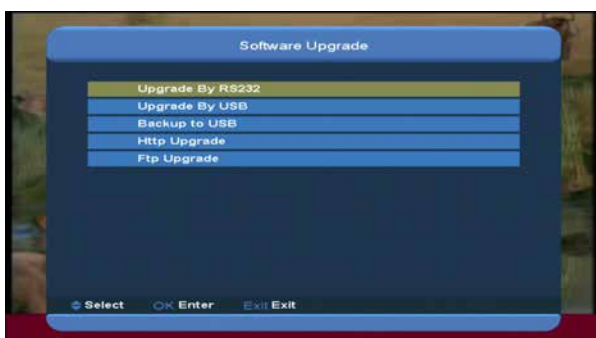
When you press [OK] key in the “Delete All Channel” item, it will pop a dialogue ask you whether confirm to delete all channel. If you select “OK”, all the channel will be deleted.

14.3.3 Save default value



When you press [OK] key in the “Save default value” item, there will show a message to inquiry you "Do you want to set current database as default data?". If you select “OK” option, it will set current data as default data

14.4 Software Upgrade



13.4.1 Upgrade by RS232:



- 1 We offer the functions for user to connecting Xfinder (Master) to the other Xfinder (Slave) via serial interface.
Connect master Xfinder to slave Xfinder via serial interface. Enter “Software Upgrade” menu in master Xfinder and press[Volume Up/Volume Down]keys to switch upgrade mode: All SW+bootloader /All SW+Channel list/Software(no channel list)/Channel list.
- 2 Moving highlight to “Start” on master receiver and press[OK]key to start upgrade.
- 3 Turn on slave Xfinder and it needn’t operate any setting.
- 4 Press [MENU]key to draw back.

13.4.2 Upgrade By USB



In this menu you can upgrade the software from USB conveniently, Press “Left/Right” button select USB A or USB B; press ' OK ' button to enter.

In this menu you can select the Upgrade Mode among Software(No channel list), Channel list, All SW+bootloader and All SW+Channel list, and you can select the appropriate upgrade file on "Upgrade File" item. After you select the

"Upgrade Mode" and "Upgrade File", press ' OK ' button on "Start" item, the Xfinder can upgrade automaticlly.

NOTE:

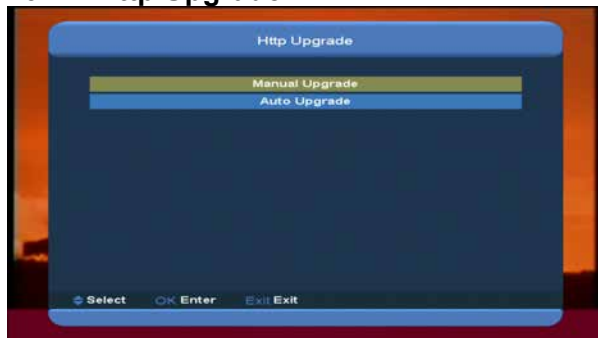
You must put the upgrade file on the /ROOT DIRECTORY of the USB storage.

13.4.3 Backup to USB

In this menu ,you can dump the software to the USB equipment

- 1.In "Backup file",you can press [OK] key to edit the file name.; Press "Left/Right" button select USB A or USB B;
- 2.In "Backup to USB", you can press [OK] to start backup software .

13.4.4 Http Upgrade



1. When connected to the Internet, Xfinder can manually or automatically make software update from file from server.

Note:

This function depends on connection with external server. In case of no software on server, this function will not work.

13.4.5 FTP Upgrade



When connected to the Internet, Xfinder can make software update from file from FTP server.

Note:

This function depends on connection with external server. In case of no software on server, this function will not work.

14.5 Language

When you enter to "Language" menu, you will see the screen like below:

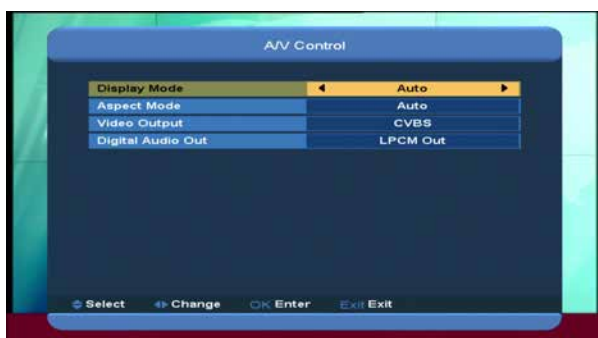


- 1 Language: press [Volume Up/ Volume Down] key to select menu languages, the selections of languages include: English, French, German, Russian, Arabic, Portuguese, Turkish, Spanish, Polish, Italian etc.
- 2 First Audio: Some channels have more than one audio language for choosing; by this function you can set the first audio for this channel. If the playing channel has the same audio as the "First Audio" you set, system will play this audio language as default. If the channel hasn't the suited audio language, then the system will compare automatically with second audio language. The selections of audio languages include: English, French, German, Russian, Arabic, Portuguese, Turkish, Spanish, Polish and Italian.

- 3 Second Audio: If the channel has no correspond audio with “First Audio” but have corresponded audio with “Second Audio”, system will play the second audio language as default. If no audio language corresponds with the “Second Audio”, then the default language of current channel will be played automatically. The selections of audio languages include: English, French, German, Russian, Arabic, Portuguese, Turkish, Spanish, Polish and Italian.
- 4 Audio Priority: Press [VOL+/VOL-] key to select Dolby or Language.
- 5 EPG: Press [VOL+/VOL-] key can select EPG language.
- 6 Subtitle Language: Press [VOL+/VOL-] key can select subtitle language.
- 7 Teletext: You can set teletext language. If the streams have this language you can see the teletext in language you set.
- 8 Press [Exit] key to draw back from “Language” menu.

14.6 A/V Control

When you enter to “TV System” menu, you will see the screen like below:



- ⑦ Display Mode is for switching the system outputting video resolution. Move highlight on it and press left or right key, it will switch video resolution circularly by the sequence “Auto-> By Native TV-> 720P_50-> 720P_60-> 1080i_50-> 1080i_60-> 1080p_50->1080p_60”. This effect is equal

to press [V.Format] Key under Full Screen and their last setting saving will be efficient for each others. By Source means system will set the video output resolution according to the program it's playing, different resolution programs switching perhaps will makes TV screen flickering. By Native TV means system will be according to the HDMI TV's max supported resolution to set its resolution, if system is not connected to a HMDI TV, it will set resolution to be default

- ⑦ Aspect Mode is for switching the screen aspect ratio mode. Now we provide below options: 4:3 PS / 4:3 LB / 16:9/Auto. You can press [Left/Right] key to select each mode circularly. 16:9 will provide user pillar box mode it means user use 16:9 TV to display but need to see a 4:3 full display picture. System will force press wide screen picture to be narrow and there're black band on left and right site. Auto means system won't do any aspect ration translation, 16:9 picture source will be good display on a 16:9 TV but will be too narrow on a 4:3 TV, and 4:3 picture source will be too wide in a 16:9 TV but will be good display in a 4:3 TV.

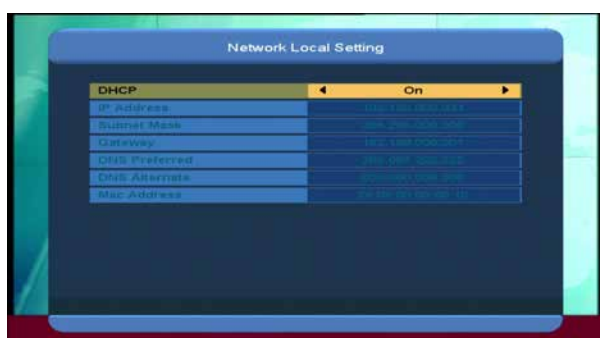
- ⑦ Video Output: Press [VOL+/VOL-] to select RGB or CVBS.

- ⑦ Digital Audio Out is for setting the both SPDIF and HDMI's digital audio output mode, it has options LPCM Out, Auto, You can press [VOL+/VOL-] Key to select each mode circularity. LPCM Out means system will decode no matter AC3 or PCM audio track data to be LPCM, digital audio decoder or HDMI TV will get LPCM digital audio data. Auto means system will detect

which the connected HDMI TV can decode and then output that data. If HDMI TV can decode AC3, system just output RAW data, if HDMI TV can decode LPCM only, system will just decode AC3 or LPCM to be LPCM and then output.

- ⑦ Press [exit] key to draw back from “A/V Control” menu.

14.7 Network Local Setting



1. In this menu you may assign a dynamic IP address to the digital Xfinder. To do so, select the DHCP On.
2. If you have a static IP address, unselect the DHCP Enable, then the IP Address, Subnet Mask, Gateway and DNS options become enabled. You have to set these options according to your IP address.

14.8 Time Setting

When you enter to “Local Time Setting” menu, you will see the screen like below:



- ⑦ GMT Usage: This item is use for open the usage of GMT. You can press [Volume Up / Volume Down] keys to switch “On/Off”.
- ⑦ The “GMT Offset” item is valid only when the setting of “GMT Usage” is “Yes”. You can

press [Volume Up / Volume Down] keys to switch “GMT Offset” value, and the range is “-12:00 ~ +12:00”, increase each half hour progressively.

- ⑦ You can press [Left/Right] to control Summer time on or off.
- ⑦ “Date” and “Time” items are valid only when the setting of “GMT Usage” is “No”. You can press [Volume Up / Volume Down] keys to moving highlight and use number keys to input directly.

If the current channel provides the correct time information, you will see the current time while you enter “Time” menu. If the channel doesn’t provide time information, you have to input the date and time information manually.

- ⑦ Press [exit] key to draw back from “Local Time Setting” Menu.

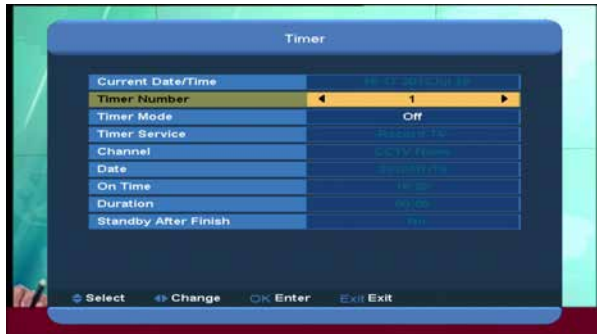
14.9 Timer

Press [enter] key to open timer menu.

- ⑦ Current time information will display on the first column; if the current time is incorrect, please modify the time information in “Time” item.
- ⑦ Timer Number: You can press [Volume Up / Volume Down] keys to set Timer number, and there are 8 timers in total.
- ⑦ Timer Mode: There are several modes for Timer to setting, include Off, Once, Daily, Weekly, Monthly and Yearly.
- ⑦ Timer Service: There are two options for “Timer Service”, include “TV Channel” and “Radio Channel” (timer setting for channel change and Wakeup/Sleep) and "Record Radio" and "Record TV" (Timer setting for Record the TV or Radio program to USB

Hard Disk) and Message (reminding message).

- ⑦ When you select “Channel” (timer setting for channel change and Wakeup/Sleep) option in “Timer Service”, the screen will display like below:



- i. Channel: press [OK] key to enter channel list and select channel that you want to setting.
- ii. Date: use number keys to input your wakeup date.
- iii. On Time: use number keys to input your wakeup time. Once the time's up, no matter what the system is in standby mode or in playing mode, the system will automatically switch to the channel you want and start to play.
- iv. Duration: After you set a time for “Duration” item, once the time's up, the system will automatically switch to standby mode. If you want not work this function, set the duration is **00:00**.

- ⑦ When you select “Message” (reminding message) option in “Timer Service”, the screen will display like below:

- v. Wakeup Message: press [Volume Up / Volume Down] key to select reminding message as Birthday, Anniversary and General.
- vi. Date, you can use number key to input your wakeup date.

- vii. On Time: use number keys to input your wakeup time. Once the time's up, no matter what the system is in standby mode or in playing mode, the system will automatically pop a reminding message.

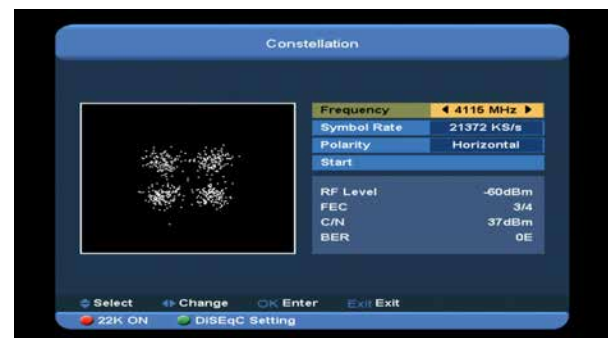
- viii. The message will always display on the screen, you can press [Exit] key to close it.

Press [exit] key to exit the current menu.

14.10 Constellation

When you enter to “Constellation” menu, you will see the screen like below: It show the picture of constellation.

DVB-S Constellation



DVB-S2 Constellation



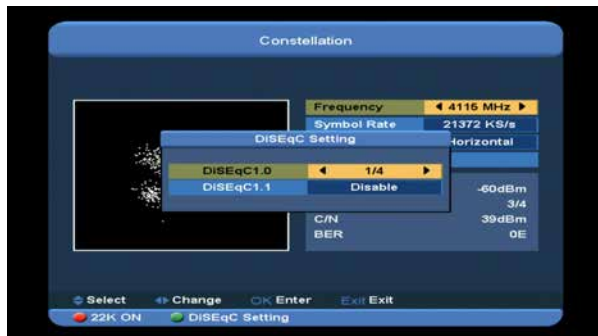
Note: If current TP has not signal, it will show ruleless white dot. And the stronger the signal, the higher the concentration of white spots.

22 k

You can use [red] key to switch “on/ off”. When this item is switched to “ON”, Xfinder will receive TV and radio input signal from 22K port. If the item is switched to “Off”, the Xfinder will receive all signals from OK port.

DisEqc Setting

Press [green] key enter "DiSeqc Setting" Menu, you will see the screen like below:



1.DiSeqc1.0: You can use[Volume Up/ Volume Down]key to switch options. There are several options for your selection:

b) Disable: without DiSeqC.

c)1/2, 2/2: two ports DiSeqC

c)1/4, 2/4, 3/4, 4/4: 4 ports DiSeqC

2.DiSeqc1.0: You can use[Volume Up/ Volume Down]key to switch options. There are several options for your selection:

a) Disable: without DiSeqC.

b)1/8, 2/8... 8/8: 8 ports DiSeqC

c)1/16, 2/16....16/16: 16 ports DiSeqC

Frequency

You can input number keys to the Frequency, The available range are "3000~13450 MHz"

Symbol Rate

You can input number keys to set the Symbol Rate, the available range are

"1000~45000Ks/s"

Polarity

In "Polarity" item, press [Left/ Right] key to select Horizontal or Vertical".

Start

Press [ok] key to start to draw the Constellation.

15. New Features

15.1 Time Shift

If you connect the USB HDD, and enable the Time Shift function in the menu "Main Menu/ Media/ PVR Setting/Time Shift",

It will start the Time Shift function automatically after you switch the program, and when you press the "▶" button the Time Shift info bar will displayed as the following picture:



- 1 You can press "⏸" button to pause the video, and can save the picture to flash by press "P+" button when the video is paused.
- 2 You can press "⏮" or "⏭" button to Fast Backward or Fast Forward.
- 3 You can press "⏪" or "⏩" button to Slow Backward or Slow Forward.
- 4 Press "left" or "right" button to jump to different position, then press "OK" button to confirm.
- 5 Press "■" button to exit the playback.

15.2 Record

If you connect the USB HDD. you can press "●" button to start record function, as following picture:



- ⑦ Press "▶" button to display the record info bar when you recording.
- ⑦ Press "●" button again to setting the record time.



- ⑦ You can press "⏸" button to pause the video, and can save the picture to flash by press "P+" button when the video is paused.



- ⑦ You can press "◀◀" or "▶▶" button to Fast Backward or Fast Forward.



- ⑦ Press "left" or "right" button to jump to different position, then press "OK" button to confirm.
- ⑦ Press "■" button to stop the recording.

16. Trouble Shooting

If you suspect there is a fault with your Xfinder, please check the following trouble shooting guide before calling authorized service agent.

Warning! Under no circumstances attempt to repair the Xfinder yourself. Tampering with the Xfinder may result in fatal electric shock and will invalidate your warranty.

Symptom	Possible cause
Settings you made in the menu have not change	The Xfinder lost power before being able to enter into standby mode Some of the Settings saved by user can be deleted partly or fully
No signal	The level of signal is weak LNB is out of order The cable from the LNB or Terrestrial is incorrectly Connected (short circuit or open circuit) The position of dish is aligned incorrectly
Xfinder is on but no picture or sound except the following messages (NO TV program)	Channel is not available Channel is scramble
Xfinder not responding to remote control unit	RCU batteries are dead or inserted incorrectly The RCU is pointing toward wrong direction
Poor picture Quality	The level of Signal strength is low
No sound	The cable is connected incorrectly The Volume level is low Muting function is active
No display on the VFD Display Panel	The power cord is not plugged in correctly.
No picture on the screen	Xfinder is in Standby mode RCA Jack or cable is not connected firmly to the video output port of television Incorrect channel or video output is selected on television Brightness level of your TV set is incorrectly defined

17. Specifications

SYSTEM RESOURCES	
Main Processor	400M Hz based CPU
Flash Memory	64M Bits
DDR SDRAM	1024Mbits
Tuner/Front-end	
Tuner Type	DVB-S / DVB-S2
Input Connector	F-type, Connector, Female
Loop Through	F-type, Connector, Female
Frequency Range	950 MHz ~ 2150 MHz
Signal Level	-65 to -25 dBm
LNB Power & Polarization	Vertical: +13V
	Horizontal: +18V
	Current: Max. 300mA
	Overload Protection
22KHz Tone	Frequency: 22±1KHz
DiSEqC Control	Amplitude: 0.6±0.2V
	Version 1.0, 1.1 1.2, USALS Available
Demodulation	QPSK, 8PSK
Input Symbol Rate	2-45 Mbps, Convolution Code Rate
	1/2, 2/3, 3/4, 5/6, 7/8, 1/4, 1/3, 2/5, 3/5, 4/5, 8/9, 9/10 and Auto
Tuner Type	DVB-T/DVB-T2
Input Connector	IEC-Type, Connector, Female
Loop Through	IEC-Type, Connector, Male
Signal Level	Nordig Compliant DBOOK Compliant
Forward Error Correction (FEC)	DVB-T: Viterbi + Reed Solomon 1/2, 2/3, 3/4, 5/6, 7/8.
	DVB-T2: LPDC + BCH 1/2, 3/5, 2/3, 3/4, 5/6.
Input Frequency	47-862MHz
Constellation	QPSK, 16-QAM, 64-QAM, 256-QAM
	Both rotated and non-rotated
Guard Interval	1/4, 19/256, 1/8, 19/128, 1/16, 1/32, 1/128
FFT Mode	1k, 2k, 4k, 8k normal and extended, 16k normal and extended, 32k normal and extended.
Channel Bandwidth	6 / 7/ 8 MHz
Antenna power output	5V/50mA max
Demodulation	COFDM 2K/8K
Number of carriers	1705/6817
FEC Decoder	1/4, 2/3, 3/4, 5/6, 7/8, k=7
Tuner Type	DVB-C
Input Connector	IEC-Type, Connector, Female
Loop Through	IEC-Type, Connector, Male
Frequency Range	47-862MHZ
Signal Level	"-20dBmV to +20dBmV"

Bandwidth	8MHZ
Demodulation	QAM
Constellations	8,16,32,64,128,256
Input Symbol Rate	1.5 - 7 Ms/s
POWER SUPPLY	
Input Voltage Adapter	Free Voltage (100~240V AC, 50/60Hz)
Power Consumption	20W MAX
Power charger output	14.5V DC 4.0A
Battery	11.1 V/5.5 AH
Battery charging time	3.5H
Battery standard discharging time	6~7H
MPEG TS A/V Decoding	
Transport Stream	MPEG-2, H.264
Input Rate	Max.120Mbit/s
Aspect Ratio	4:3, 16:9, Letter Box
Video Decoding	MPEG-2, MP@ML, MPEG-4 part 10/H264
Video Resolution	720*480P/I, 720*576P/I,1280*720P,1920*1080I, 1920*1080P
Audio Decoding	MEPG-1 layer I/II, Mpeg2 layer II, Dolby digital, Dolby digital plus
Audio Mode	Left / Right / Stereo/ Mono
Sampling Rate	32, 44.1 and 48KHz
A/V & DATA INPUT/OUTPUT	
A/V IN/OUT	Video CVBS input/output
	Audio L/R input/output
RS-232C	Transfer rate 115.2Kbps
	3.5mm"Phone Jack Type
Audio output	Built-in speakers
RJ-45	10M/100M
USB	One USB 2.0 slot Compatible for Host
U disk	2G Bytes
HDMI	VER1.3
	Type A
PHYSICAL SPECIFICATION	
LED display	7 inch
Size[W*H*D]	242mmX 160mmX46mm
Net Weight	<2.0KG
Operation Temperature	0℃ ~+45℃
Storage Temperature	-10℃ ~+70℃
Storage Humidity	5%~95% RH (Non-Condensing)